

General Integrated Chip Accelerometer

Features:

- IC Inside
- Simple Measure System

Model AI180

Specifications:

Dynamic Characteristics

Axes Sensitivity (20±5 deg C)	~5 mV/g
Measurement Range	1000 g
Max Transverse Sensitivity	<= 5 %
Frequency Response (+/-10%)	1 - 10000 Hz
Resonance Frequency	40,000 Hz
Temperature Response	See temperature curve
Polarity	Positive

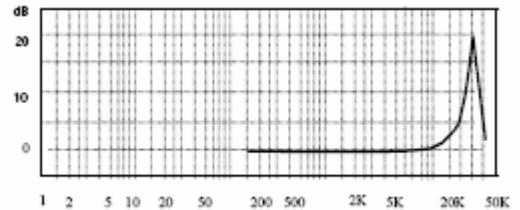
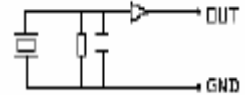
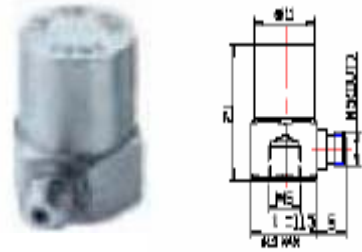
Electrical Specifications

Voltage Supply	+12~+28V _{DC}
Current	+2 ~ +10 mA
Max Signal Output	<=5V _P
Output Impedance	< 100 Ω
Bias Voltage	7 +/- 1 V _{DC}
Noise (1~20KHz)	< 8mg

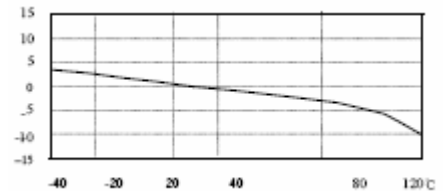
Environmental/Physical Characteristics

Temperature Range	-20 to +120 °C
Shock Limit	5000g
Temperature Sensitivity	4 mg/°C (0.3Hz)
Case Strain Sensitivity	5 mg/ μ ε
Magnetic Field Sensitivity	0.5 g/T
Weight	8 g
Case Material	Stainless Steel
Mounting	M5 internal thread (bottom)
Piezo Material	PZT-5
Structure	Cut mode
Output Connection	M12x1 socket (top)

Included Accessories	Calibration sheet
	M5x1 screw
	RVVP Cable (2m)
	w/ 1 M12x1 socket



Frequency Response Curve



Temperature Curve

Product information:
KCF Technologies, Inc.

www.kcftech.com
112 W. Foster Avenue
State College, PA 16801
TEL: 814-867-4097
FAX: 814-238-1875

North American Sales & Support:
Scantek Inc.

www.scantekinc.com
7060 Oakland Mills Road, Suite L
Columbia, MD 21046
TEL: 410-290-7726
FAX: 410-290-9167