

## General Integrated Chip Accelerometer

### Features:

- IC Inside
- Simple Measure System

### Model AI181

### Specifications:

#### Dynamic Characteristics

Axes Sensitivity (20±5 deg C)	~10 mV/g
Measurement Range	500 g
Max Transverse Sensitivity	< 5 %
Frequency Response (+/-5%)	1 - 8000 Hz
Resonance Frequency	35,000 Hz
Temperature Response	See temperature curve
Polarity	Positive

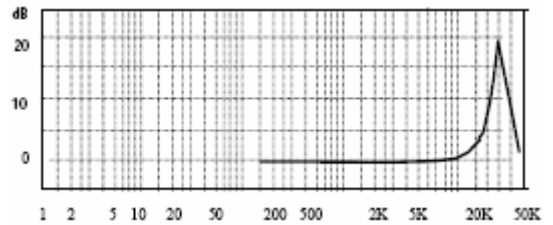
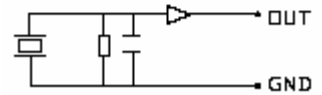
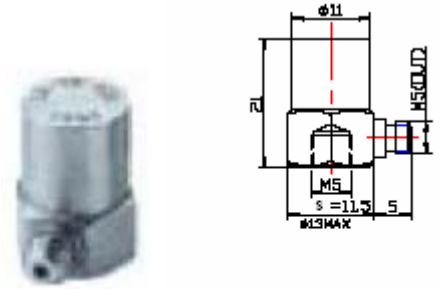
#### Electrical Specifications

Voltage Supply	+12~+28V <sub>DC</sub>
Current	+2 ~ +10 mA
Max Signal Output	≤ 5V <sub>p</sub>
Output Impedance	< 100 Ω
Bias Voltage	7 +/- 1 V <sub>DC</sub>
Noise (1~20KHz)	< 5mg

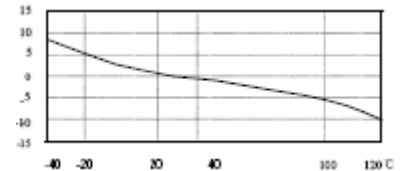
#### Environmental/Physical Characteristics

Temperature Range	-20 to +120 °C
Shock Limit	1000g
Temperature Sensitivity	0.12g/°C (0.3Hz)
Case Strain Sensitivity	0.6g/T
Magnetic Field Sensitivity	2 g/ μ ε
Weight	14 g
Case Material	Stainless Steel
Mounting	M5
Piezo Material	PZT-5
Structure	Center Compress
Output Connection	L5

Included Accessories	Calibration sheet
	M5x1 screw
	L5 STYV-1 (2m)



Frequency Response curve



Temperature Curve

Product information:  
**KCF Technologies, Inc.**

[www.kcftech.com](http://www.kcftech.com)  
112 W. Foster Avenue  
State College, PA 16801  
TEL: 814-867-4097  
FAX: 814-238-1875

North American Sales & Support:  
**Scantek Inc.**

[www.scantekinc.com](http://www.scantekinc.com)  
7060 Oakland Mills Road, Suite L  
Columbia, MD 21046  
TEL: 410-290-7726  
FAX: 410-290-9167