

## General Integrated Chip Accelerometer

### Features:

- IC Inside
- Simple Measure System

### Model AI182

### Specifications:

#### Dynamic Characteristics

|                               |                       |
|-------------------------------|-----------------------|
| Axes Sensitivity (20±5 deg C) | ~20 mV/g              |
| Measurement Range             | 250 g                 |
| Max Transverse Sensitivity    | <= 5 %                |
| Frequency Response (+/-10%)   | 0.5 - 8000 Hz         |
| Resonance Frequency           | 35000 Hz              |
| Temperature Response          | See temperature curve |
| Polarity                      | Positive              |

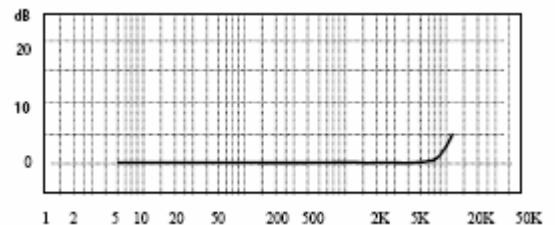
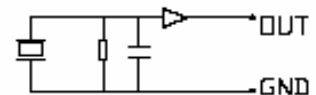
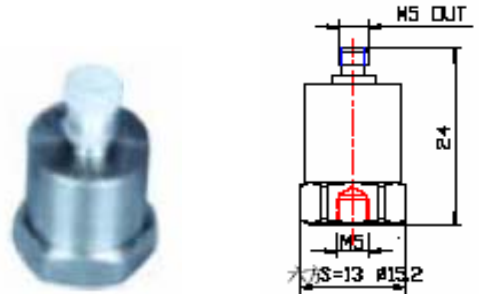
#### Electrical Specifications

|                   |                         |
|-------------------|-------------------------|
| Voltage Supply    | +12~+28V <sub>DC</sub>  |
| Current           | +2 ~ +10 mA             |
| Max Signal Output | <5V <sub>p</sub>        |
| Output Impedance  | < 100 Ω                 |
| Bias Voltage      | 7 +/- 1 V <sub>DC</sub> |
| Noise (1~20KHz)   | < 2mg                   |

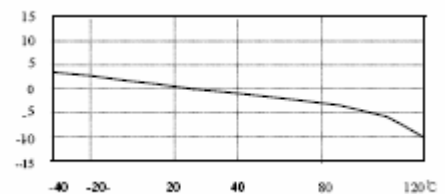
#### Environmental/Physical Characteristics

|                            |                 |
|----------------------------|-----------------|
| Temperature Range          | -20 to +120 °C  |
| Shock Limit                | 3000g           |
| Temperature Sensitivity    | 0.1g/°C (0.3Hz) |
| Case Strain Sensitivity    | 0.6 mg/μ ε      |
| Magnetic Field Sensitivity | 2g/T            |
| Weight                     | 17g             |
| Case Material              | Stainless Steel |
| Mounting                   | M5 Screw        |
| Piezo Material             | PZT-5           |
| Structure                  | Center Compress |
| Output Connection          | L5              |

|                      |                   |
|----------------------|-------------------|
| Included Accessories | Calibration sheet |
|                      | M5x1 screw        |
|                      | L5 STYV-1 (2m)    |



Frequency Response Curve



Temperature Curve

Product information:  
**KCF Technologies, Inc.**

[www.kcftech.com](http://www.kcftech.com)  
112 W. Foster Avenue  
State College, PA 16801  
TEL: 814-867-4097  
FAX: 814-238-1875

North American Sales & Support:  
**Scantek Inc.**

[www.scantekinc.com](http://www.scantekinc.com)  
7060 Oakland Mills Road, Suite L  
Columbia, MD 21046  
TEL: 410-290-7726  
FAX: 410-290-9167