

Integrated Chip Accelerometer

Features:

- IC Inside
- Normal Cable
- Simple Measure System

Model AI186A

Specifications:

Dynamic Characteristics

Axes Sensitivity (20±5 deg C)	~100 mV/g
Measurement Range	50 g
Max Transverse Sensitivity	<= 5 %
Frequency Response (+/-10%)	1 - 5000 Hz
Resonance Frequency	25,000 Hz
Temperature Response	See temperature curve
Polarity	Positive

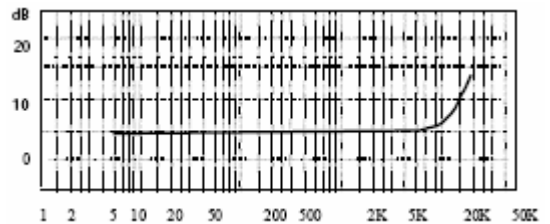
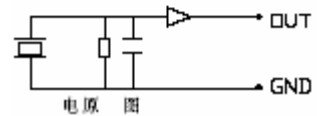
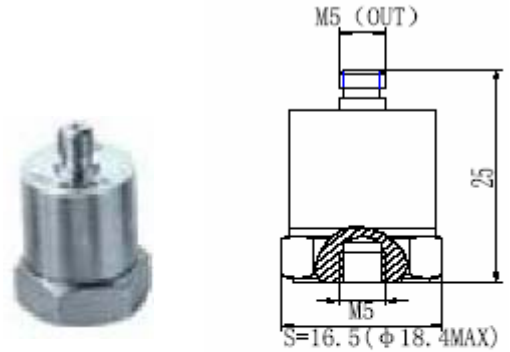
Electrical Specifications

Voltage Supply	+12~+28V _{DC}
Current	+2 ~ +10 mA
Max Signal Output	<=5V _P
Output Impedance	< 100 Ω
Bias Voltage	7 +/- 1 V _{DC}
Noise (1~20KHz)	<0.4mg

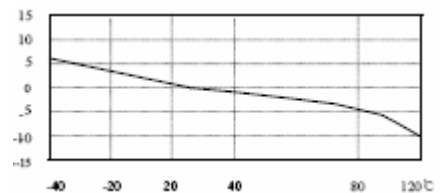
Environmental/Physical Characteristics

Temperature Range	-20 to +120 ° C
Shock Limit	2000g
Temperature Sensitivity	8mg/°C (0.3Hz)
Case Strain Sensitivity	0.2 mg/ μ ε
Magnetic Field Sensitivity	1.5g/T (50Hz, 0.03T)
Weight	24g
Case Material	Stainless Steel
Mounting	M5 Screw
Piezo Material	PZT-5
Structure	Cut Mode
Output Connection	L5

Included Accessories	Calibration sheet
	M5 Screw
	L5 (STYV-1) (2m) x1



Frequency Response Curve



Temperature Curve