

## Integrated Chip Accelerometer

### Features:

- IC Inside
- Normal Cable
- Industry Measure System

### Model AI186GT

### Specifications:

#### Dynamic Characteristics

Axes Sensitivity (20±5 deg C)	~100 mV/g
Measurement Range	50g
Max Transverse Sensitivity	<= 5%
Frequency Response (+/-10%)	1 - 4000 Hz
Resonance Frequency	20,000 Hz
Temperature Response	See temperature curve
Polarity	Positive

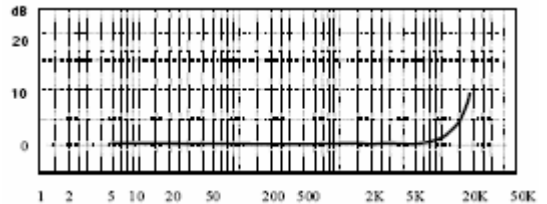
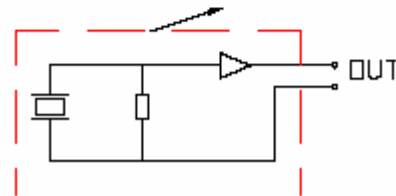
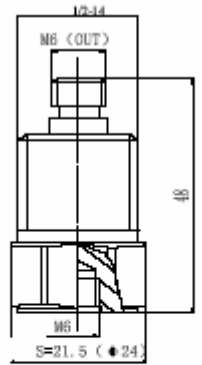
#### Electrical Specifications

Voltage Supply	+12~+28V <sub>DC</sub>
Current	+2 ~ +10 mA
Max Signal Output	<5V <sub>P</sub>
Output Impedance	< 100 Ω
Bias Voltage	7 +/- 1 V <sub>DC</sub>
Noise (1~20KHz)	<0.4mg

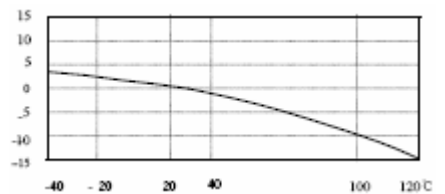
#### Environmental/Physical Characteristics

Temperature Range	-20 to +120 °C
Shock Limit	1000g
Temperature Sensitivity	8mg/°C (0.3Hz)
Case Strain Sensitivity	0.2 mg/μ ε
Magnetic Field Sensitivity	1g/T
Weight	65g
Case Material	Stainless Steel
Mounting	M6 Screw
Piezo Material	PZT-5
Structure	Cut Mode
Output Connection	Top L6

Included Accessories	Calibration sheet L6 STYV-2 (2m)
----------------------	-------------------------------------



Frequency Response Curve



Temperature Curve