

General Integrated Chip Accelerometer

Features:

- IC Inside
- Low Frequency
- High Sensitivity
- Normal Cable

Model AI188

Specifications:

Dynamic Characteristics

Axes Sensitivity (20±5 deg C)	~500 mV/g
Measure Range	10 g
Max Transverse Sensitivity	< 5 %
Frequency Response (+/-10%)	0.2 - 2500 Hz
Resonance Frequency	8000 Hz
Temperature Response	See temperature curve
Polarity	Positive

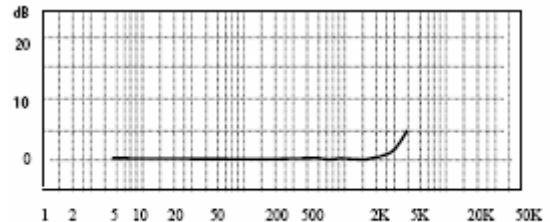
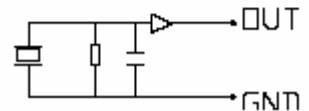
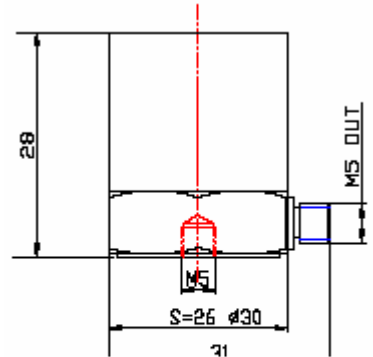
Electrical Specifications

Voltage Supply	+12~+28V _{DC}
Current	+2 ~ +10 mA
Max Signal Output	<5V _P
Output Impedance	< 100 Ω
Bias Voltage	7 +/- 1 V _{DC}
Noise (1~20KHz)	< 0.08mg

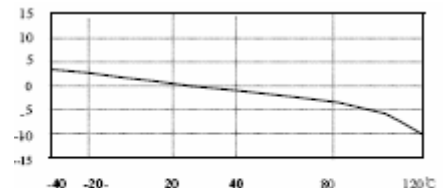
Environmental/Physical Characteristics

Temperature Range	-20 to +120 °C
Shock Limit	1000g
Temperature Sensitivity	20mg/°C (0.3Hz)
Case Strain Sensitivity	0.4 mg/μ ε
Magnetic Field Sensitivity	0.55g/T
Weight	90g
Case Material	Stainless Steel
Mounting	M5
Piezo Material	PZT-5
Structure	Cut Mode
Output Connection	L5

Included Accessories	Calibration sheet
	M5 Screw
	L5 STYV-1 (2m)



Frequency Response Curve



Temperature Curve

Product information:
KCF Technologies, Inc.
www.kcftech.com
 112 W. Foster Avenue
 State College, PA 16801
 TEL: 814-867-4097
 FAX: 814-690-1579

North American Sales & Support:
Scantek Inc.
www.scantekinc.com
 7060 Oakland Mills Road, Suite L
 Columbia, MD 21046
 TEL: 410-290-7726
 FAX: 410-290-9167