

## General Integrated Chip Accelerometer

### Model AI188G

#### Features:

- IC Inside
- Industry Measure System
- Normal Cable

#### Specifications:

##### Dynamic Characteristics

|                               |                       |
|-------------------------------|-----------------------|
| Axes Sensitivity (20±5 deg C) | ~500 +/- 5% mV/g      |
| Measure Range                 | 10 g                  |
| Max Transverse Sensitivity    | < 5 %                 |
| Frequency Response (+/-10%)   | 0.2 - 1000 Hz         |
| Resonance Frequency           | 6000 Hz               |
| Temperature Response          | See temperature curve |
| Polarity                      | Positive              |
| Isolation                     | >10 <sup>8</sup> Ω    |

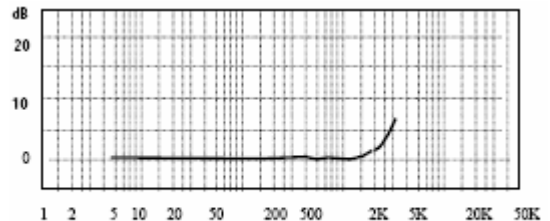
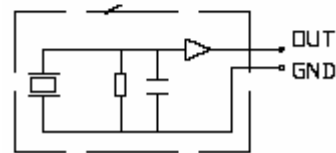
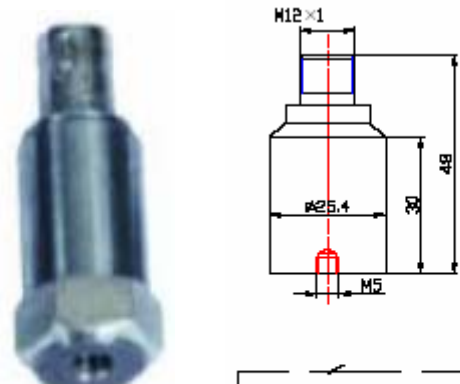
##### Electrical Specifications

|                   |                         |
|-------------------|-------------------------|
| Voltage Supply    | +12~+28V <sub>DC</sub>  |
| Current           | +2 ~ +10 mA             |
| Max Signal Output | <5V <sub>P</sub>        |
| Output Impedance  | < 100 Ω                 |
| Bias Voltage      | 7 +/- 1 V <sub>DC</sub> |
| Noise (1~20KHz)   | < 0.08mg                |

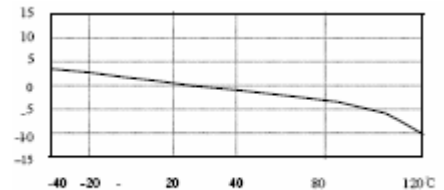
##### Environmental/Physical Characteristics

|                            |                 |
|----------------------------|-----------------|
| Temperature Range          | -20 to +120 °C  |
| Shock Limit                | 2000g           |
| Temperature Sensitivity    | 50mg/°C (0.3Hz) |
| Case Strain Sensitivity    | 0.4 mg/μ ε      |
| Magnetic Field Sensitivity | 0.6g/T          |
| Weight                     | 120g            |
| Case Material              | Stainless Steel |
| Mounting                   | M8              |
| Pies Material              | PZT-5           |
| Structure                  | Cut Mode        |
| Output Connection          | Top             |

|                      |  |
|----------------------|--|
| Included Accessories | Calibration sheet<br>M12X1 RAVE (3m)<br>M8 Screw |
|----------------------|--|



Frequency Response Curve



Temperature Curve

Product information:  
**KCF Technologies, Inc.**

[www.kcftech.com](http://www.kcftech.com)  
112 W. Foster Avenue  
State College, PA 16801  
TEL: 814-867-4097  
FAX: 814-690-1579

North American Sales & Support:  
**Scantek Inc.**

[www.scantekinc.com](http://www.scantekinc.com)  
7060 Oakland Mills Road, Suite L  
Columbia, MD 21046  
TEL: 410-290-7726  
FAX: 410-290-9167