

General Integrated Chip Accelerometer

Model AI189

Features:

- IC Inside
- High Sensitivity
- Normal Cable
- Cut Mode

Specifications:

Dynamic Characteristics

Axes Sensitivity (20±5 deg C)	~1000 mV/g
Measure Range	5 g
Max Transverse Sensitivity	< 5 %
Frequency Response (+/-10%)	0.5 - 1000 Hz
Resonance Frequency	5000 Hz
Temperature Response	See temperature curve
Polarity	Positive

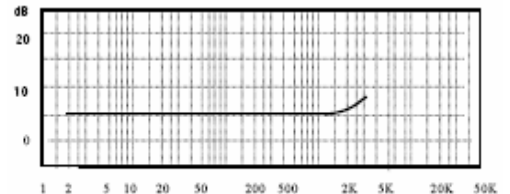
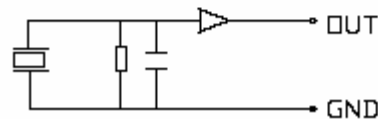
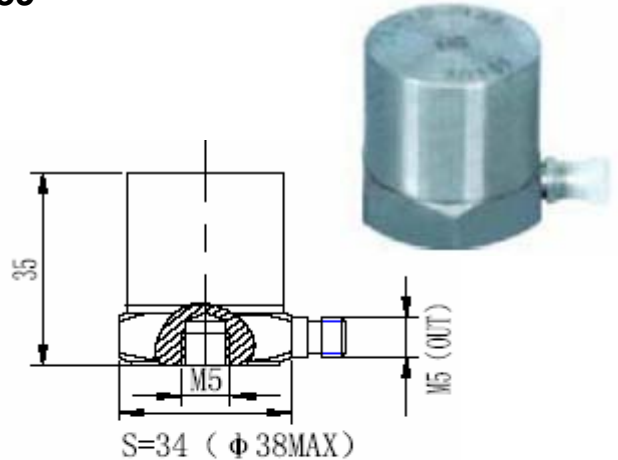
Electrical Specifications

Voltage Supply	+12~+28V _{DC}
Current	+2 ~ +10 mA
Max Signal Output	<5V _P
Output Impedance	< 100 Ω
Bias Voltage	7 +/- 1 V _{DC}
Noise (1~20KHz)	< 0.04mg

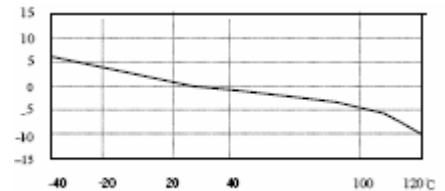
Environmental/Physical Characteristics

Temperature Range	-20 to +120 °C
Shock Limit	500g
Temperature Sensitivity	8mg/°C (0.3Hz)
Case Strain Sensitivity	0.2 mg/μ ε
Magnetic Field Sensitivity	1.5g/T (50Hz, 0.03T)
Weight	110g
Case Material	Stainless Steel
Mounting	M5
Piezo Material	PZT-5
Structure	Cut Mode
Output Connection	L5

Included Accessories	Calibration sheet M5/M8 Screw L5 STYV-1 (2m)
----------------------	--



Frequency Response Curve



Temperature Curve