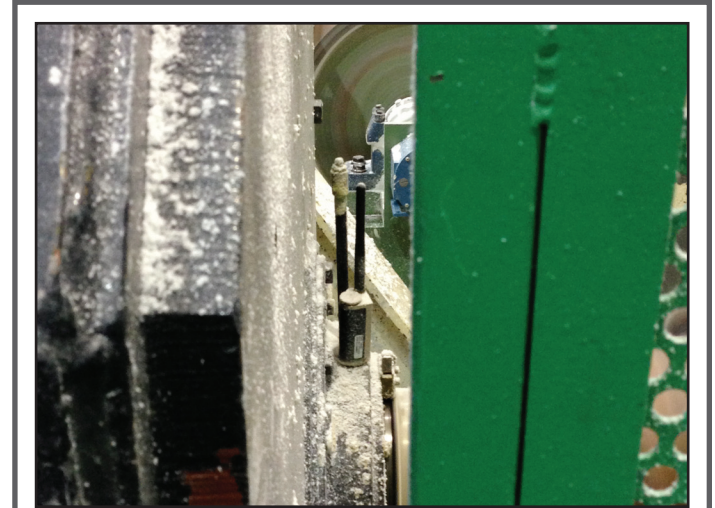


Problem

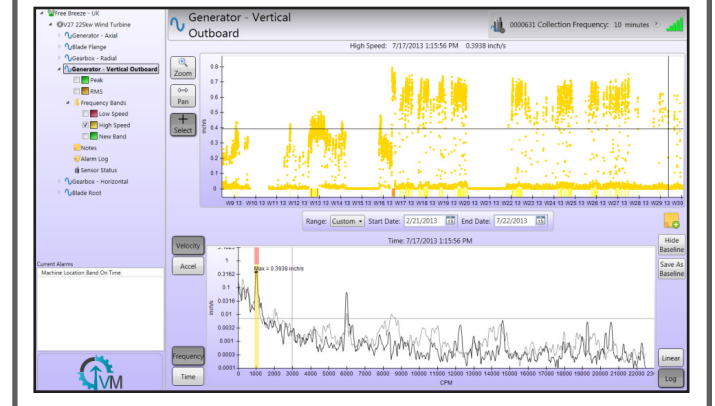
Paper manufacturing involves large, complex, fast-moving machinery that can be extremely costly in cases of unexpected downtime or bearing failures. Monitoring is particularly challenging because of the large number of bearings per machine, and the challenge in safely accessing the machines to acquire predictive data.

Solution

The SmartDiagnostics® solution by KCF Technologies is the least-expensive and easiest way to achieve continuous monitoring on paper conversion machines. Installing 20 wireless sensors affordably enables continuous monitoring of the vibration and temperature trends. Each sensor wirelessly transmits high-value data safely and at low cost, enabling automatic alarms and integration into the existing software infrastructure.



Top: Wireless vibration monitoring with SmartDiagnostics® allows paper mills to safely monitor machines that are difficult to reach and are not safe to access. **Bottom:** A sample SmartDiagnostics® software screen capture.



| Success Factors | Customer Value |
|--|--|
| Wireless high-band-width data transmission | Safe, continuous health monitoring |
| Rapid installation | Capability to expand across the plant |
| Continuous health tracking and alarms | Machine trends are apparent with 1,000 times more data |
| Automatic tracking of levels | More productive time for the PdM team |



KCF Technologies
336 South Fraser Street
State College, PA 16801
+1 814-867-4097
www.kcftech.com
sales@kcftech.com