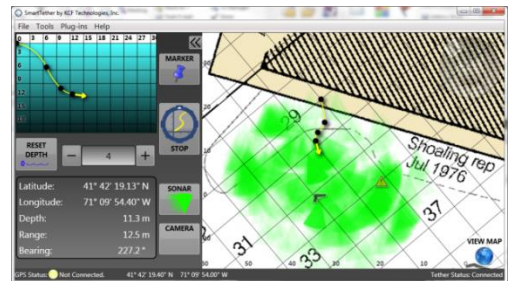


Smart Tether for VideoRay Pro4 ROV (ST-PRO4)

Smart Tether offers unmatched real-time GPS location of your VideoRay in a self-contained, non-acoustic tether-shape-measuring system that is quick to deploy and easy to use. In addition to determining the location and heading of the diver, Smart Tether displays a live plot of the entire tether's shape, improving overall situational awareness and safety. The included software captures the scan and position history of the ROV to ensure that an entire area is searched. Smart Tether's high-speed, real-time positioning makes navigation possible even in zero-visibility conditions. With advanced scanning and target marking capabilities, Smart Tether increases the capabilities of your VideoRay, making your operations safer, faster, and more effective.

- Extremely fast setup time (under 5 minutes)
- Fast position update rate (> 15 Hz)
- Plug-and-play operation with VideoRay Pro4



Reliable Monitoring

Smart Tether allows reliable, real-time position monitoring of your VideoRay ROV. Simple to set up and use, and impervious to acoustic interference, Smart Tether allows increased confidence during difficult underwater operations and can help improve operational efficiency and reduce the possibility of entanglements or other dangerous situations.

Flexible Configuration

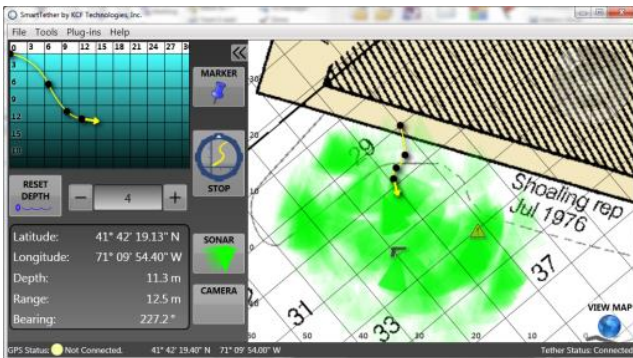
Smart Tether is available in different lengths for different types of operations, allowing you to get a system that is tailor-fit to the needs of your ROV team. Smart Tether can be operated from a fixed location, moving platform, or boat, using the included GPS basepoint receiver.

Cost Effective

Smart Tether is priced competitively compared to other underwater navigation and positioning systems. Because it can be set up so quickly and used in almost any environment, a Smart Tether system can be used for a wide variety of applications, making it a one-size-fits-all solution for all your underwater operations.

Smart Tether Pro4 System Specifications

Mechanical	
Standard Tether Lengths	40 m (130 ft) or 75 m (250 ft)
Tether Diameter	8 mm (0.31 in)
Node Length	150 mm (6 in)
Node Diameter	22 mm (0.85 in)
Working Strength	890 N (200 lb)
Buoyancy	Neutral
Environmental	
Storage Temperature	-40 to 120 °C (-40 to 238 °F)
Maximum Depth	305 m (1000 ft)
Pressure Sensor Saturation	305 m (1000 ft)
Electrical	
Tether Connectors	8-pin wet-mateable (male at top side, female at ROV end)
Power Supply	Powered by VideoRay, directly replaces standard tether
Software	
Minimum PC Requirements	<ul style="list-style-type: none"> Windows Vista or higher 1.6 GHz processor 1 Gb (32-Bit) or 2 Gb (64-Bit) RAM 3 Gb of available hard drive space 2 USB ports (1 for tether, 1 for included GPS receiver)
Capabilities	<ul style="list-style-type: none"> Real-time 3D positioning >15 Hz data update rate Target marking and reacquisition Map or chart overlay Search area mapping Real-time data output Data storage for post-processing (CSV and KMZ data files, can store millions of waypoints)
System Components	
Included Accessories	<ul style="list-style-type: none"> USB GPS receiver Software license (pre-installed on VideoRay Pro4)



Configurations

Part Number	Description
ST-PRO4	Complete 40 meter system with all topside hardware
ST-PRO4-75	Complete 70 meter system with all topside hardware